



Paxton

Access Control





# Paxton

Paxton Access Ltd  
Home Farm Road  
Brighton  
East Sussex  
BN1 9HU  
UK

+44 1273 811011  
sales@paxton.co.uk  
www.paxton.co.uk

## Contents

What is access control?	5
Why choose access control instead of locks and keys?	7
Keeping your building secure	9
24 hour protection	11
What about hands free access?	13
Energy saving, money saving	15
Access control from your desk	17
Central control - managing the system	19
Flexibility - control who goes where	21
Event reporting - tells you who is where and when	23
Prevent false alarms	25
Email and text alerts	27
Design your own ID cards	29
Useful HR tools	31
Building control	33
Link with your CCTV system	35
Link with your fire alarm	37
Control multiple sites	39
Case studies	40



## What is access control?

Access control is quite literally about controlling access to your premises, or a specific area of your premises. Instead of the old lock and key method, access control secures your building electronically. With tokens and readers instead of locks and keys; you say who has access, when they have access and where exactly they can have access to.

- Simple
- Modern
- Complete control
- Flexible security

We understand that access control does not need to be complicated. Our access control systems look professional but are also really easy to use. Paxton systems are so user friendly; they require minimal training to run and are designed to make life as easy as possible for you. They are so convenient, you will wonder why you ever used anything else before.

*'We offer industry leading UK based customer support, whatever the problem, we are here to help'*



## Why choose access control instead of locks and keys?

- Convenient
- Economic
- Modern
- Secure

Huge bunches of keys are common for some sites, but if the keys get lost imagine how many locks would need replacing to make your site secure again. The cost implications are huge. With access control, each staff member, or visitor, is issued with one token or card to gain access through any door, gate or barrier. They simply present their token at a reader and access is permitted or denied, as appropriate. There is no need to change locks if someone loses their token. This gives you total confidence that your premises stay secure, something that is just not possible with a lock and key system.





## Keeping your building secure

- Decrease the risk of opportunist theft
- Track who was where, and when

The security and safety of your staff and assets is serious business. No one wants to think that staff are at risk while at work and there is no better way to protect them than with an intelligent, reliable, access control system. Should an incident or a crime take place on your premises, your access control system allows you to isolate certain areas and even track who was in a particular area at the time.

*'Our best-selling Net2 keyfobs come with a lifetime guarantee, they are so robust you can even put them through the wash!'*



## 24 hour protection

- Restrict areas to certain groups or individuals
- Protect your building
- Save money on night-time security

With access control you can restrict specific areas of your premises to certain groups of staff or individuals. You can even give users access rights specifically for certain times of the day or night. This gives you control over the security of your site around the clock and means you do not need to spend money on night-time security. You can rest assured that your premises are protected, even outside of normal working hours.



## What about hands free access?

- Warehouses
- Disabled access - helping to comply with DDA
- Hospitals
- Offices
- Vehicle access

Instead of searching for your keys when you approach a door, imagine if it automatically unlocks as you reach it. Our hands free technology is a great way of improving movement around a site or simply getting you out of the rain faster! The reader on the door picks up the signal from your token, be it stored about your person or in a handbag or pocket. The door then unlocks without you having to present your token directly to the reader.

*'Even if you don't need them all now, our products are so versatile that you can easily add to your system later'*



## Energy saving, money saving

- Avoid energy wastage
- Save money on energy bills
- Improve your green footprint

We have also designed readers with energy saving capabilities, helping companies cut costs on utility bills and present a greener outlook. As market leaders we are constantly committed to developing intelligent access control products to suit your needs.





## Access control from your desk

- All doors are controlled directly from one or more PC's
- You can instantly update user access levels at the PC
- Set up zones for areas that only certain users have access to
- Pinpoint where staff members and visitors are in the building
- Monitor staff working hours

If you like the sound of access control so far but would like to do more with your system, choosing PC based access control will give you even greater benefits. Paxton software is designed to be simple and recognisable. Administrators can be fully competent and confident in using the software with less than two hours of training!

*'We offer a wide range of additional products that can make your system more than just access control'*



## Central control - managing the system

- Central control from your desk
- Instant updates
- Easy to use system

Being able to manage the system from your desk is a major benefit of using an access control system with a PC. This convenience will make your job so much easier, you can update access permissions at the click of a button. PC based access control is so easy to manage; users can be added to, or barred from, the system within seconds. A Paxton system can control any site, from just one door up to hundreds of doors, with thousands of users.

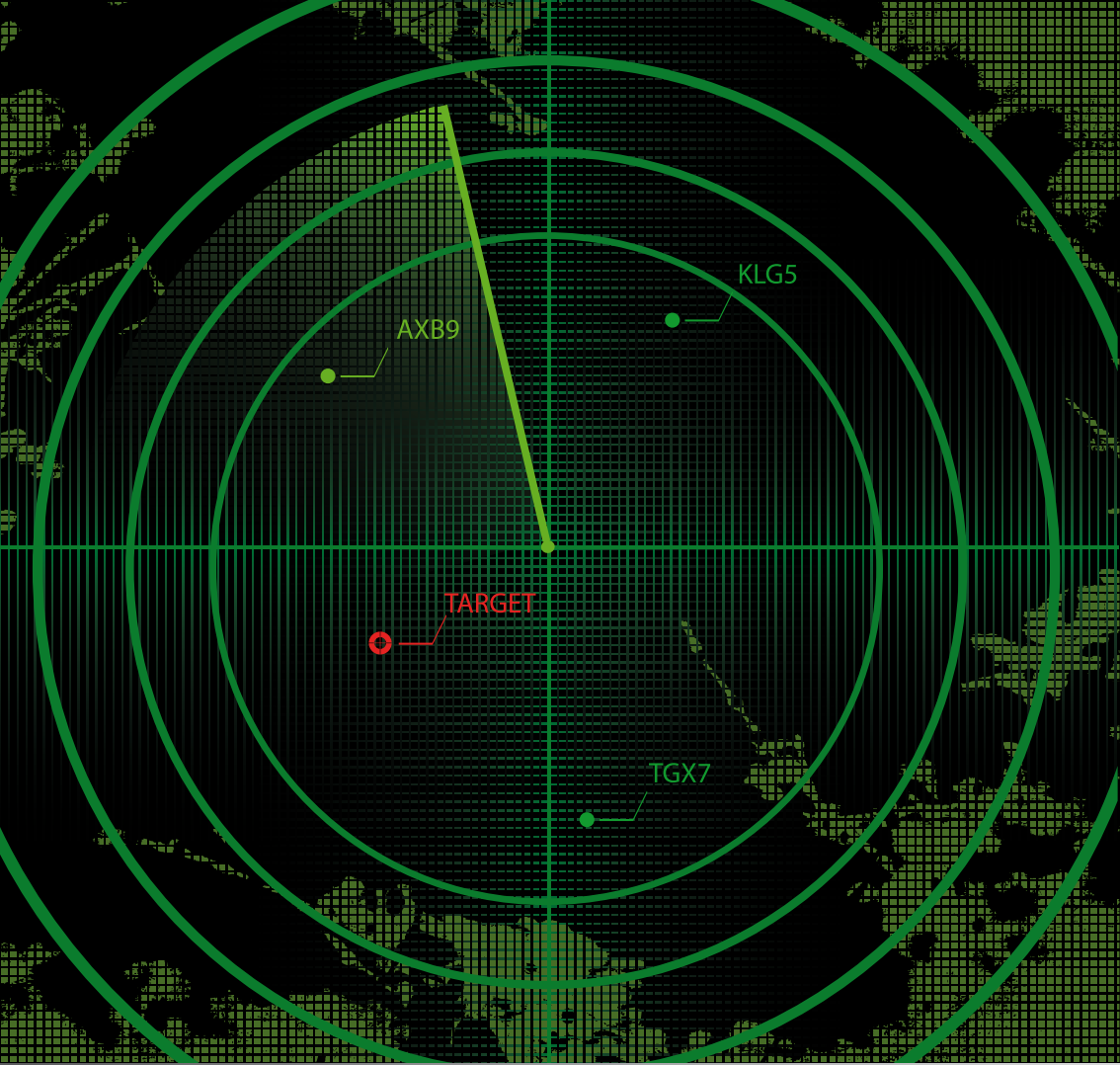


## Flexibility - control who goes where

- Added security
- Flexible control over who goes where
- Restrict areas of hazard or danger

PC based access control allows you to grant users access as and when needed, according to time and place. You also have total control and flexibility over who has access, when and where to. Access privileges can be tailored to groups or individuals, at different times of the day or night.

*'As a British manufacturer we have full quality control on all our products, from start to finish'*



AXB9

KLG5

TARGET

TGX7

## Event reporting - tells you who is where and when

- See who is in at a glance
- View staff and visitor movements on the events screen
- Monitor access events as they happen

A PC based access control system means that you can view all staff and visitor movements on site, from your computer screen. The events screen will also show you when a door is forced. This helps you improve the security of your site and shows you when and where an event occurred. This is particularly useful for sensitive sites where an intruder can pose a serious threat and extra protection is a must.





## Prevent false alarms

- No more false alarms
- Get a text message or an email if the alarm is triggered

Being woken up in the middle of the night because the intruder alarm has been triggered at work is no joke, especially when it turns out to be a false alarm. You could also lose your police response if it happens too often. With our PC based access control system, false alarms and late night call outs can be prevented. A Paxton system, integrated with your intruder alarm, stops you from entering the building if you do not have permission to unset the alarm. If you do have permission, the system unsets the alarm for you before unlocking the door.

*'Ordering tokens couldn't be easier. Just visit our website to place your order online'*

Compose

Inbox (1)



starred

## Email and text alerts

Receive a message for:

- A door being forced
- Someone trying to access a restricted area

A Paxton PC based system can be set up to send an email or a text message to alert you if a specific event has occurred. This means you can get instant knowledge of what is happening on a site, even if you are not present.



## Design your own ID cards

- Card designer program
- Simple to use
- Professional finish

A PC based access control system can be used with a card designer package, meaning your access cards double up as ID cards. All you need is a card printer! Card designer cards look professional and give your business a really smart image.

*'We publish all our retail prices online, so you can be sure you are getting the best deal'*



## Useful HR tools

- Manage holidays
- Help with payroll
- Monitor unauthorised absence
- Keep track of sick days and help to identify potential health issues

Our PC based system comes with a really useful and straightforward timesheet feature that gives you a comprehensive record of staff working hours. An accurate time and attendance report can be generated from the access control software, at any point. This is a helpful HR tool which makes it easy to keep track of staff movements on site and ensure employees keep proper hours.





## Building control

Control:

- Lighting
- Air conditioning
- Heating
- Any electrical appliance

Building control and energy saving go hand in hand. It makes sense to ensure that all electrical equipment and power is switched off once your building is empty, both environmentally and financially. With access control from Paxton you can set the system to do just this and it is so simple. When the last person leaves at the end of the day the power is automatically switched off, you do not have to go round checking each room!

*'Our friendly support team are the best in the industry and are available six days a week'*



1  
E-2-1902

2  
ENTRANCE-1-190

5  
T-3-1903

6  
OFFICE-P1-1941

8  
-02-1918

9  
STAIR-NE-1950  
10

12  
R-3-1933

14  
ELEVATOR-4-1934

15  
ELEVATOR

## Link with your CCTV system

- Manage just one piece of software
- Increase security

If you want to extend security beyond door control, you can link your CCTV footage directly to your access control system. Once your CCTV and access control are working together, you only have to manage one piece of software. You can view CCTV images against door events and alarm events from within the access control software. Should a barred token be used to attempt to gain access to your building, you can see who it was and when and where it happened.



## Link with your fire alarm

- Safe egress from a building
- Complying with fire regulations
- Automatically unlocking all fire doors
- Optimum staff safety

The access control system will also create a roll call report, telling you who was in the building when the alarm went off. This is a valuable feature which helps you to identify exactly who is safe from harm once the building has been evacuated. Not only does this give you peace of mind but should anyone be unaccounted for, you can pass on reliable information to the fire brigade when they arrive.

*'Our market leading products are award winning and industry renowned'*



## Control multiple sites

- Manage buildings from anywhere
- An easy way to extend your system

There are so many benefits to having electronic access control, you can even use it to control more than just one site. New sites can be controlled remotely from the same PC as before, meaning you can manage buildings from across the country, or even across the world. It makes expanding your premises hassle free.



## Case study

### San Marino Police Department

The city of San Marino has nearly 14,000 inhabitants. The sense of historic preservation amongst its homeowners means the city's strict zoning laws have prevented large scale building developments.

The heightened sense of security that has followed 9/11 prompted Chief Isaacs to look at installing an electronic access control system. Security installer, Post Alarms, installed Net2 from Paxton.

Fred Dunner at Post Alarms said: 'The police are very busy and do not want to spend hours learning new software. We have never tried a system which sets up as easily and intuitively as this system. Initialising and launching the software worked really nice.'



## Case study

### Conquest Hospital

Conquest Hospital is a modern District General Hospital in Hastings. In 2002 Conquest merged with Eastbourne Hospital to form East Sussex Hospitals NHS Trust. When the hospital's access system failed in 2007, Net2 was installed across all of the Trust's sites.

The new Net2 system now acts as a deterrent to opportunist theft, and gives the Trust 'total confidence' in the access control they have on their blood bank, baby unit and mental health wing.

John Kirk, Security Manager, said: 'Compared to our earlier access control system it is far superior. This is the best period of security stability we have enjoyed in a long time.'





## Case study

### National Star College

National Star College is an independent specialist college that helps young disabled students fulfil their potential through innovative programmes of education and independence training.

When Net2 from Paxton was recommended to improve security, the new hands free capability was an added bonus as some of the students struggled to use conventional locks and keys.

Paxton hands free is great for buildings that need to comply with the Disability Discrimination Act. Lynette Barret, Residential Services Manager said: 'The Net2 system appeared to be very easy to manage, could expand with our needs and had the added advantage of offering contactless hands free access.'



## Case study

### Endemol Studios

Possibly best known in the UK for producing Big Brother and Changing Rooms, Endemol are a successful company with a very professional image. Security is very important to Endemol.

Danny Chapman, Facilities Manager, said: 'Installing Net2 has been a big benefit for us. We no longer have manned security as we are so confident we have no need of it. The result is that our budget for security has reduced quite substantially, yet I feel that our offices are better protected.'

Danny would have no hesitation in recommending Net2 to other business users. The flexibility of the system, combined with the cost savings achieved, means Net2 has been a good investment for Endemol.



## Case study

### Manchester United

Manchester United Football Club has 330 million supporters worldwide, its fame has spread well beyond the borders of the UK. The stadium has a capacity of 76,000, so security and the safe movement of fans on match days is of paramount importance.

Garndene Communications installed Net2 from Paxton to control egress from the stadium at the end of a match.

Adrian Brown of Garndene said: 'I know there are proprietary systems out there that could come close to doing what Manchester United needed but we wanted to be able to meet their exact requirements and working with Paxton has enabled us to do this.'



## Case study

### Mulberry Store - Bond Street

Mulberry have just completed a major refurbishment on their flagship Bond Street store. Access control was required on the site, with an estimated 60 users. Net2, the PC based access control system from Paxton, was specified to be used with CCTV cameras.

Installer, Peter Rutt, said: 'Net2 offered a good solution to the needs identified. We have used Net2 before and knew that it is more than intelligent enough to do what was required. The software is Windows based. Once the client was shown how to use the software, they were immediately confident in using it without the need for IT support.'

The site has needed no support since the system was commissioned. Mulberry are very happy.



## Case study

### Birchen Lane Children's Home

An established children's home, Birchen Lane underwent a year's refurbishment and the access control system was installed as part of that redevelopment.

The managers of Birchen Lane undertake the day-to-day management of the Net2 system. This is primarily for the issuing and cancelling of cards.

Paul Cocking, Social Services Manager, said: 'This process is beautifully simple and a tremendous time and cost saver. I've worked in homes for over 30 years and this is the first time that I haven't had to carry huge bunches of keys, worried about the security of the master key or had to face the near constant hassle and cost of replacement locks. Net2 is quick and easy to use, tightens security and saves money.'



## Case study

### Riviera Maritime Media

Riviera Maritime Media (RMM) grew from an initial partnership formed in 1997 to buy and publish the Speed at Sea journal. The rapid expansion of the company meant that their previous office space was no longer large enough. Having found suitable office space, MD Steve Labdon, wanted to have an access control system fitted. Keeping track of staff was also a consideration for the new system.

Net2 has solved the problem of staff traceability and the company's directors can verify their teams' whereabouts.

Steve said: 'Security was our biggest issue. The Net2 access control system will definitely be added to any new office space we take on. It works extremely well for us.'



Paxton Access Ltd  
Home Farm Road  
Brighton  
East Sussex  
BN1 9HU  
UK

+44 1273 811011  
[sales@paxton.co.uk](mailto:sales@paxton.co.uk)  
[www.paxton.co.uk](http://www.paxton.co.uk)

All information correct at the point of publication, but may be subject to change without notice.